



CRUSADER



Apt 16 Crusader Mill, Chapelton Street, Piccadilly East, Manchester, M1 2EW

Exclusive mill conversion in Piccadilly East, a short walk to Manchester Piccadilly Station and Manchester's vibrant Northern Quarter. Set to be one of the city's most talked about developments, & finished to the highest standard around. This Ground floor apartment has a large entrance hallway which opens up to large open plan living area which is flooded with light and character. Two large windows, exposed brickwork and beams, giving it a real loft feel. There is a high specification kitchen with Bosch oven, integrated dishwasher and fridge freezer. The bedroom is well proportioned, with a floor to ceiling window which looks out onto the communal hallways. Large bathroom with stylish black tiles, backlit de-misting mirror and waterfall mixer shower. The hallway also offers a large storage cupboard. No Parking. Hyperoptic enabled, communal landscape gardens with fire pit & BBQ for residents to use!

Price £229,950

Viewing arrangements

Viewing strictly by appointment through the agent
245 Deansgate, Manchester, M3 4EN 0161 833 9499 opt 3

Entrance Hallway

Engineered oak wooden flooring. Storage cupboard.

Living Room/Kitchen

25'4" x 11'8"

Range of wall and base units with quartz white worktop over. Integrated CDA fridge/freezer, Bosch dishwasher, Bosch cooker with induction hob and extractor over. Blanco stainless steel sink with chrome mixer tap. Under cupboard lighting. TV/Telephone point. Wall mounted electric heater. Wooden beams. Exposed brickwork. TV/Telephone point. Engineered oak wooden flooring.

Bedroom

12'3" x 10'3"

TV point. Wall mounted electric heater. Engineered oak wooden flooring. Wall lights.

Bathroom

Accessed via the hallway, a three piece bathroom comprising large shower, WC, sink with mixer tap, partially tiled wall and tiled flooring, heated towel rail, extractor and wall lighting.

Externally

Concierge. BBQ area with bluetooth speakers. Lifts to all floors. Bike storage.

Additional Information

Service Charge: £2496 per annum

Ground Rent: £306 per annum review period every 5 years.

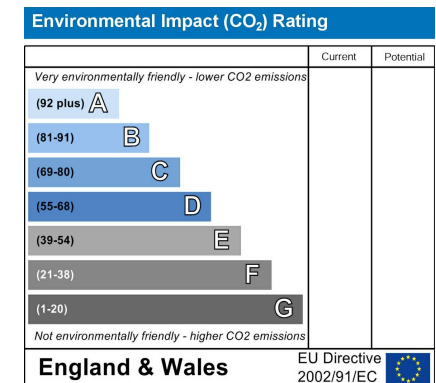
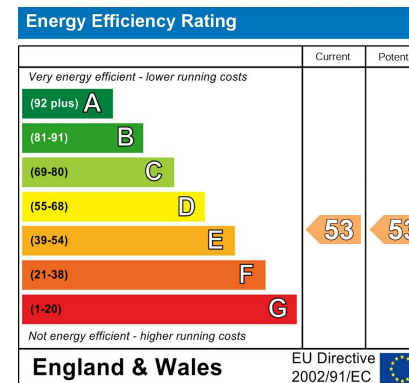
Lease: 250 years from 2015

Council Tax Band: C

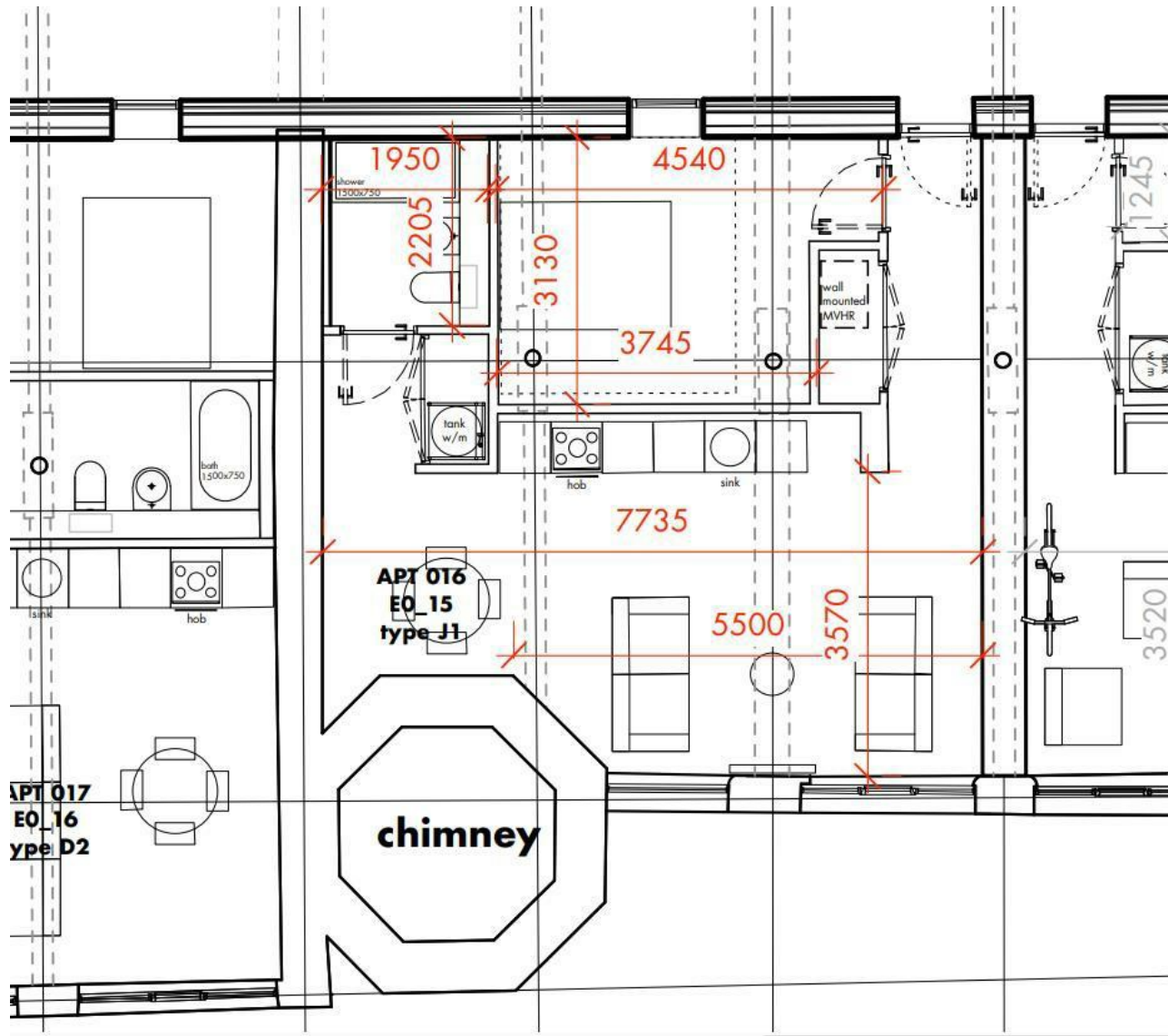
Management Company: Zenith

Agents Note

To be able to purchase a property in the United Kingdom all agents have a legal requirement to conduct Identity checks on all customers involved in the transaction to fulfil their obligations under Anti Money Laundering regulations. We outsource this check to a third party and a charge will apply. Ask the branch for further details.







These particulars are believed to be accurate but they are not guaranteed and do not form a contract. Neither Jordan Fishwick nor the vendor or lessor accept any responsibility in respect of these particulars, which are not intended to be statements or representations of fact and any intending purchaser or lessee must satisfy himself by inspection or otherwise as to the correctness of each of the statements contained in these particulars. Any floorplans on this brochure are for illustrative purposes only and are not necessarily to scale.

Offices at: Chorlton, Didsbury, Disley, Hale, Glossop, Macclesfield, Manchester Deansgate, Manchester Whitworth Street, New Mills, Sale, Wilmslow and Withington

245 Deansgate, Manchester, M3 4EN

0161 833 9499 opt 3

manchester@jordanfishwick.co.uk
www.jordanfishwick.co.uk

